

Composite Profiles For Electrical Industry



**Fiberbar
Composites**



Manufacturing of Glass Fiber Reinforced Plastic Profiles

Fiberbar Composites is a manufacturer of composites profiles. Our core competence is manufacturing of insulation profiles for electrical industry. Our products are made using pultrusion process, a continuous automated manufacturing process which allows production of composite profiles in continuous lengths. Our typical composites compose of glass fiber reinforcement bound together by thermosetting matrices such as polyesters and vinyl esters.

Machining & Painting of Profiles

Our customers can order ready-to-fit parts without themselves having to carry out or source out next steps down the chain. We have on-site facilities for CNC machining, painting and varnishing.

Material Testing & Quality

Material testing is an integral part of our material quality. Fiberbar Composites has in-house high voltage testing capabilities for determination of electrical breakdown strength and a mechanical test unit for flexural, tensile and compressive strength.

Our certified quality and environmental management system complies with the requirements of ISO 9001:2015 and ISO 14001:2015 standards.

Electrical Engine Slot Wedges

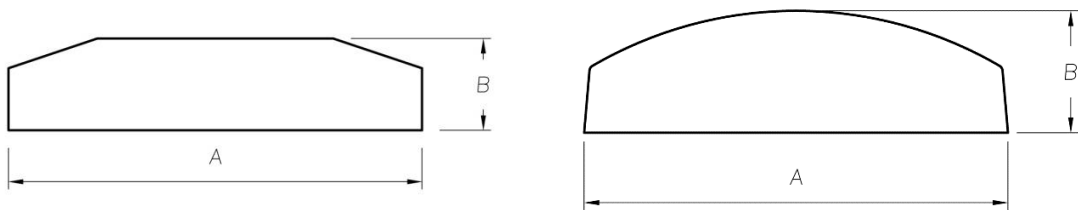
Production of slot wedges for electrical motors, where the slot wedge covers the copper wires and provides electrical and thermal insulation. Many trapezoid, half round and hybrid slot wedge designs are readily available.



Electrical Engine Slot Wedges

Trapezoid Profiles

Typical Material Quality : **Fiberbar Type-K**
Polyester + Glass fiber

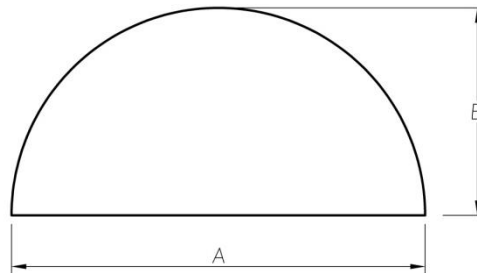


A, mm	4,5	5	5,5	5,75	6	6,5	7	8	8	9	10	11	12
B, mm	2	2	2	2	2	2	2	2	3	2,5	3	2,5	2,5

*Standard trapezoid slot wedges. Many other sizes are available which are not listed here.
Please contact us for more information!*

Electrical Engine Slot Wedges
Half Round Profiles

Typical Material Quality : *Fiberbar Type-K*
Polyester + Glass fiber



A, mm	3	3	4	4	5	5	6	6	7	8	8	10	12	14
B, mm	2	3	2	3	2,5	3	2,5	3	3	3	4	4	6	7

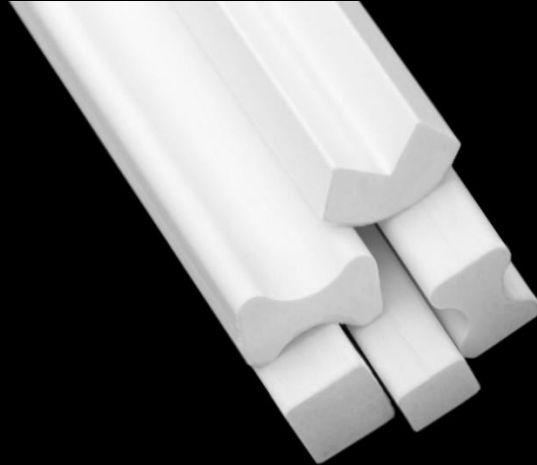
*Standard half round slot wedges. Many other sizes are available which are not listed here.
Please contact us for more information!*



Transformers

We offer a wide range of insulation profiles to *transformer manufacturers*. Our portfolio covers a broad specter of dog bones, corner and rectangular profiles which are commonly used as spacers and air gaps between coil and insulation in dry type transformers.

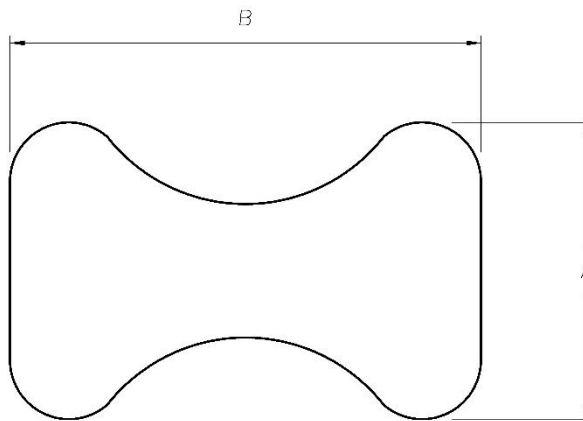
Many standard dimensions are available as stock items with short lead times. Stock lengths or profiles cut to desired lengths available.



Transformer Spacers - Dog bones, corner profile, rectangular profiles

Dog Bones

Typical Material Qualities: *Fiberbar Type-K* and *Type-T*
Polyester + Glass fiber

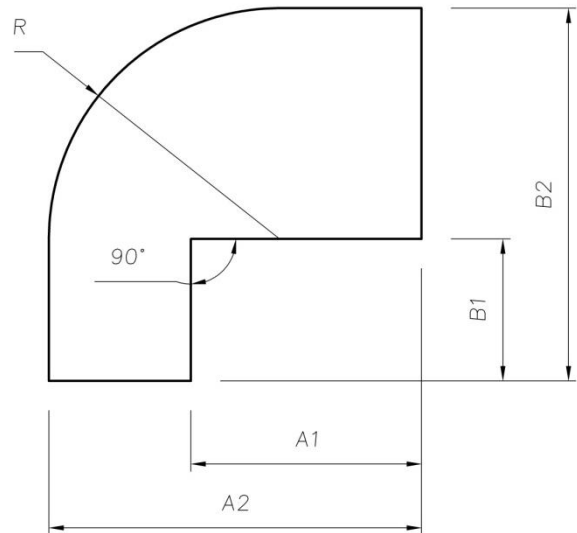
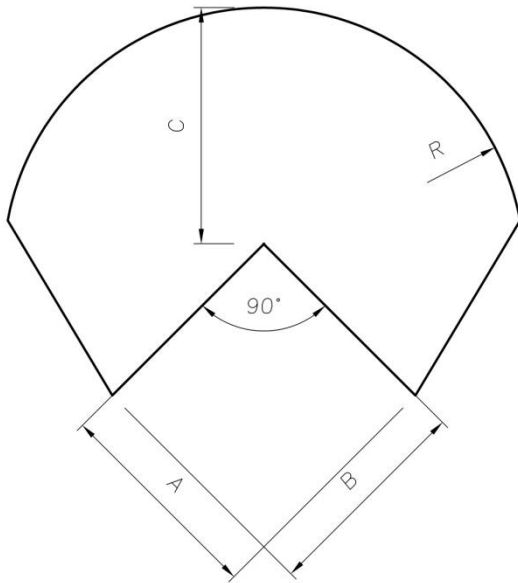


A, mm	5	8	10	10	10	12	13
B, mm	8	10	13	16	19	19	16

*Standard dog bone profiles. Many other sizes are available which are not listed here.
Please contact us for more information!*

Transformers Corner Profiles

Typical Material Qualities: *Fiberbar Type-K* and *Type-T*
Polyester + Glass fiber



A, mm	B, mm	C, mm	R, mm
4,9	4,9	2,6	4
7	7	5,7	10
10	10	10	12

A1, mm	A2, mm	B1, mm	B2, mm	R, mm
13	21	8	21	13
13	26	13	26	13

*Standard corner profiles. Many other sizes are available which are not listed here.
Please contact us for more information!*

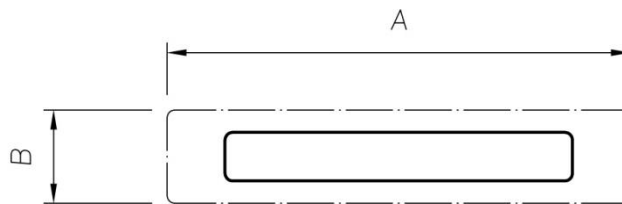
Transformers Rectangles

Typical Material Qualities: *Fiberbar Type-K* and *Type-T*
Polyester + Glass fiber



A, mm	2,5	4	5	5	6	8,5	10	12	25	25	32
B, mm	6	6	5	6	6	6,5	10	5	6	10	8

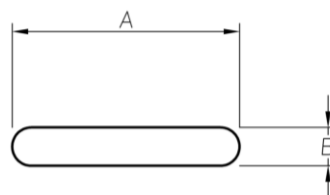
Standard rectangular profiles. Many other sizes are available which are not listed here.



Possible to make different low-volume rectangular pultruded strips with minor tool costs in size range shown below. Please contact us for more information!

A, mm	max 70, step 1mm
B, mm	2 - 10mm, step 1mm

Radiused Rectangular Profiles



A, mm	25	30	30	40
B, mm	16	3	4	4

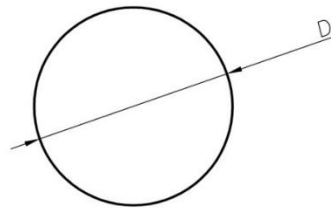


Fiberglass Rods

Typical Material Qualities: *Fiberbar Type-K*

Polyester + Glass fiber

Vinyl ester + Glass fiber



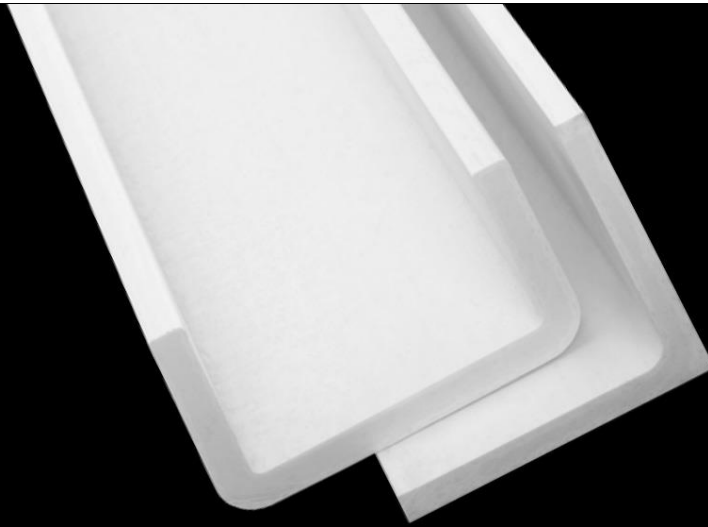
<i>D, mm</i>	6	7	8	9	10	12	14

Standard rods. Many other sizes are available which are not listed here.

Structural Composites

Fiber reinforced structural composite profiles are the basis of construction in situations requiring very good mechanical performance in combination with low weight, ease of assembly, electrical insulation and high degree of thermal endurance. Additionally, we offer complex machining of these profiles.

Our customers can order ready-to-fit parts without themselves having to carry out or source out next steps down the chain. We have on-site facilities for CNC machining, painting and varnishing.



U & L Profiles

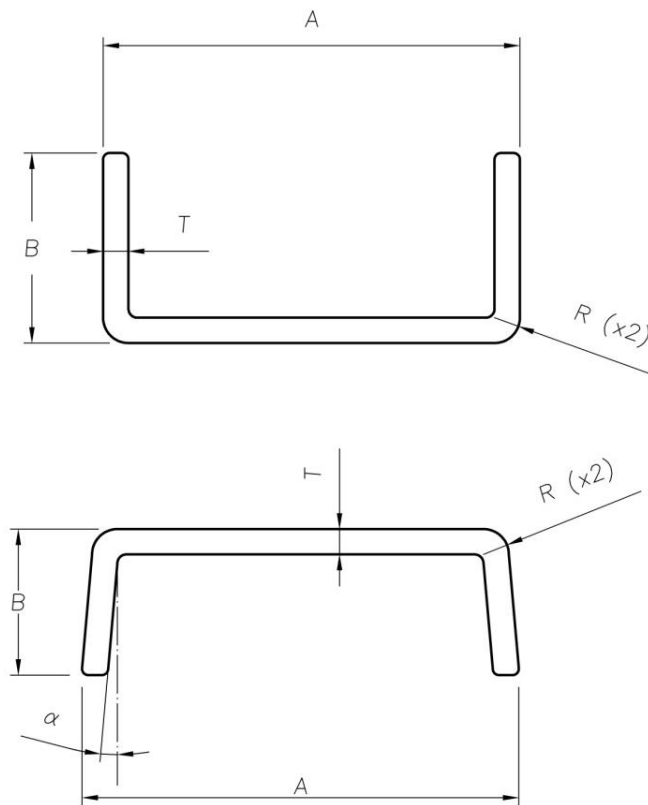
Structural Composites

U Profiles

Typical Material Qualities:

Fiberbar Type-T_{MAT} and *Type-T_R*

Polyester + Glass fiber



A, mm	B, mm	T, mm	R, mm	α , °
25	26	2,5	5,5	2
42	40	5	4	-
50	26,5	8	4	2
61	32	5		-2
60	35	6	8	-
70	30	4	5,5	2
80	35	6	0,5	-

Standard corner profiles. Many other sizes are available which are not listed here.

Please contact us for more information!

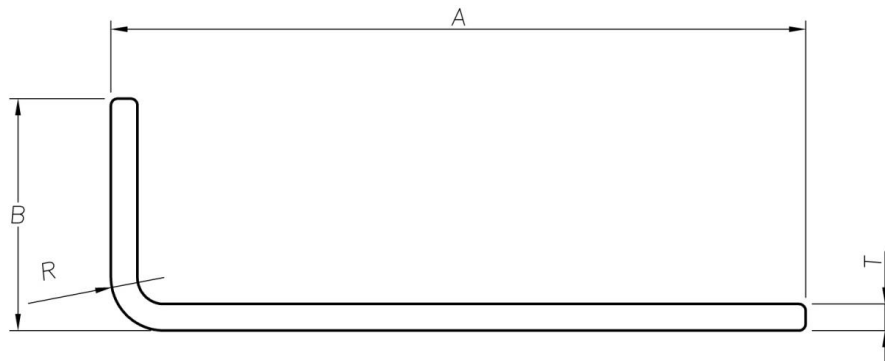
Structural Composites

L Profiles

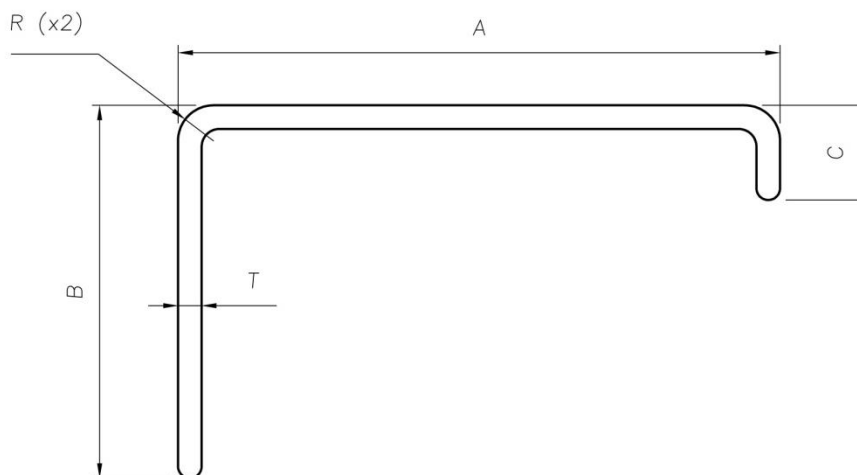
Typical Material Qualities:

Fiberbar Type-T_{MAT} and *Type-T_R*

Polyester + Glass fiber



A, mm	14	35	60	60	75	130	135
B, mm	14	35	40	60	50	130	47
T, mm	2,5	8	5	6	5	12	7
R, mm	4	3	1	9	1	3	5



A, mm	B, mm	C, mm	T, mm	R, mm
102	63	16	4	92

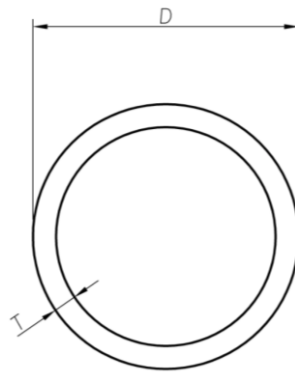
Standard corner profiles. Many other sizes are available which are not listed here.

Please contact us for more information!

Structural Composites

Tubes

Typical Material Qualities:
Vinyl ester + Glass fiber



	<i>D, mm</i>	<i>T, mm</i>
60/52	52	4
40/32	40	4